

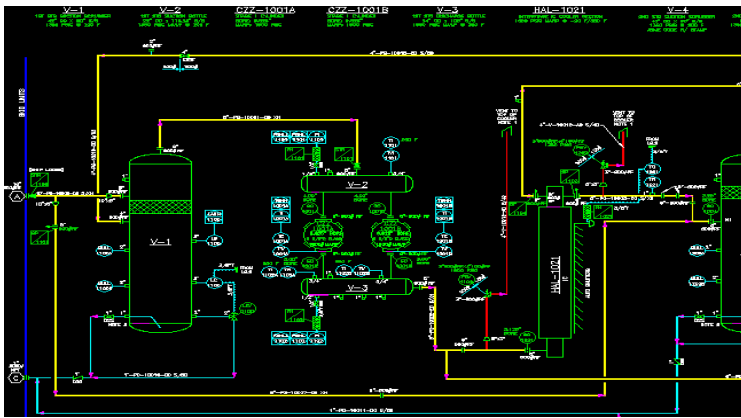


# IMAGE

## Compression Engineering & Design

### Overview

Those who know about compressor package design know that a lot of experience goes into a good design and that a lack of experience can be a disaster. With well over 100 years in accumulated compression packaging experience, the IMAGE team will help you avoid the common pitfalls and provide a repeatable path to success. From front end P&ID development, to the tedious details required for an economical yet robust foundation, IMAGE has the ability to perform.

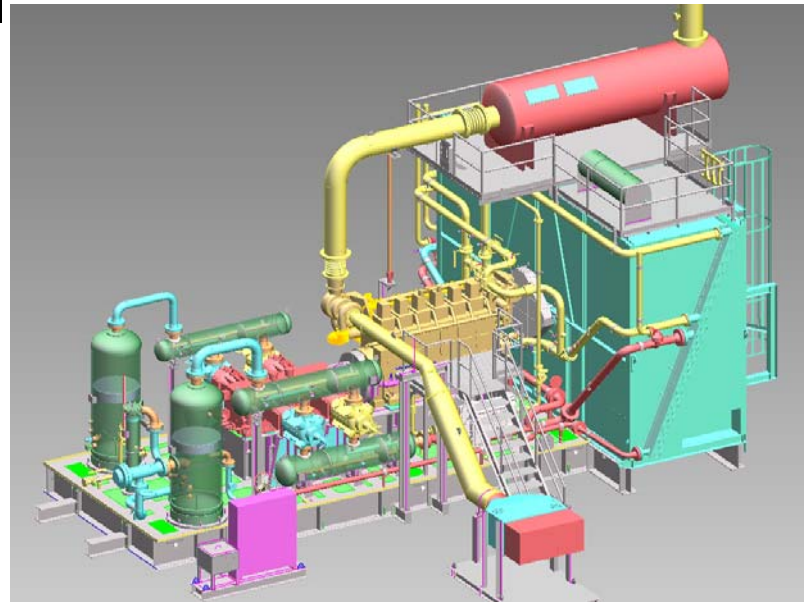


### Intelligent P&ID's

IMAGE will develop the appropriate P&ID drawings with all detail required for successful completion. Sizing lines, valves, PSV's, and properly selecting controls to support the required operating features is only the beginning. Leveraging our proprietary intelligent P&ID system, we can better support logical system development while managing change in a controlled environment and all the while giving you an unprecedented view into your design from day 1 through EDGE 360.

### Advanced 3D Modeling

IMAGE uses a combination of industry leading software (CADWorx Plant) in conjunction with our own custom developed applications that allow us to develop rock solid designs of the highest quality with the least amount of effort. Compounding the advantages of our P&ID interface, IMAGE links the 3D model to the P&ID's so that changes can be driven through to design rather than hand carried. Changes to the P&ID trigger flags in the 3D model to alert the designer of miss-matches so that changes can be managed in a controlled and transparent fashion. Many pieces of information such as Weights, Center of Gravity Calculations, Bills of Materials, etc. are just the natural by-products delivered from our 3D models.



### Typical Deliverables

- Intelligent P&ID's with live Data Base
- General Arrangement Drawings
- Scrubber & Bottle Drawing and ASME code Calculations
- Enhanced Weight and CG calculation Method
- 3D model (with Smart Design Review via EDGE 360)
- Structural Steel Skid Base and Misc. Steel
- ISOGEN generated Isometric Drawings
- Detailed Bill of Materials delivered in Excel

IMAGE is appropriately insured and registered to practice Engineering in TX, LA, and KS.

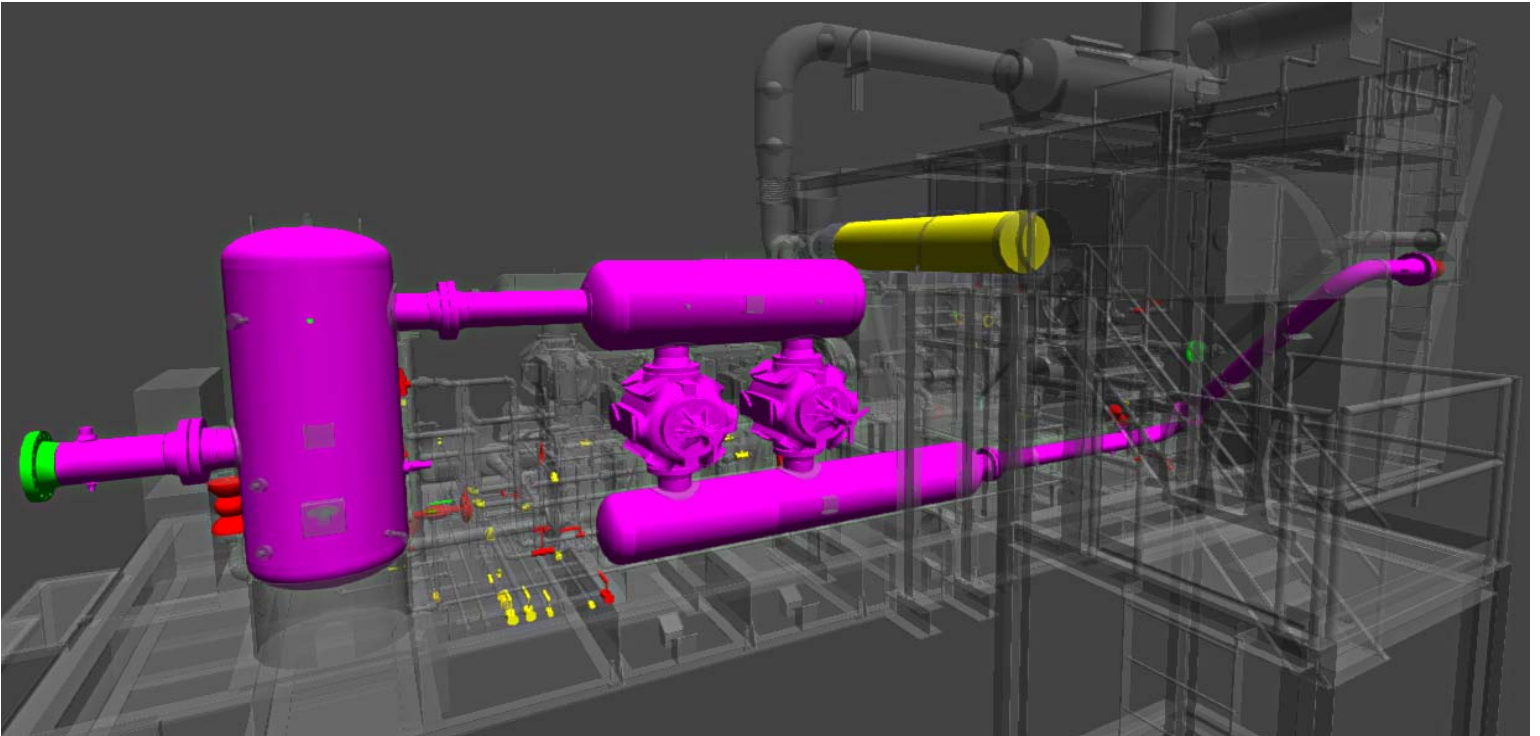


# IMAGE

## Compression Engineering & Design

### A One Stop Shop

IMAGE can handle all of the details required to deliver success. Confirming major equipment performance, managing Pulsation & Torsional Study, working with panel vendor, performing ASME code calculations, structural analysis, lift analysis, PSV sizing, recycle control, startup bypass sizing, settle out calculations, coupling selection, sizing cooler sheaves. These are just a few of the things that are often overlooked or under evaluated. Not all of the above is necessary in every design, but knowing when to ask the question is paramount. IMAGE will help you identify all the hazards as appropriate for your particular design and then provide the support to properly evaluate solutions and mitigate risk.



### Committed to Continual Improvement

At IMAGE Custom Engineering Solutions, Continuing Education is not just a buzz word, it is one of our core values. We believe that to become and remain competitive, continual pursuit of further education must become and remain a high priority. IMAGE staff regularly participate in Industry Conferences, Seminars, College Classes, Internal Classes, Online Training, and Industry Organization Chapter Meetings.

### And We Can Handle the Rest.....

Not only does IMAGE provide all the Engineering and Design necessary to deliver a quality Compressor Package, we can also provide complete compressor facility design including all ancillary and supporting equipment as well Civil/Structural Engineering and Design, Metering, Separation, Dehydration, Filter Separators, Gas Sweetening, etc. IMAGE regularly provides detailed Engineering & Design support for almost any kind of production equipment required at compressor stations.

*EDGE 360 brings unprecedented visibility and interaction with a web-based view of your design and provides an economical asset management platform to compliment your equipment throughout its entire life cycle.*